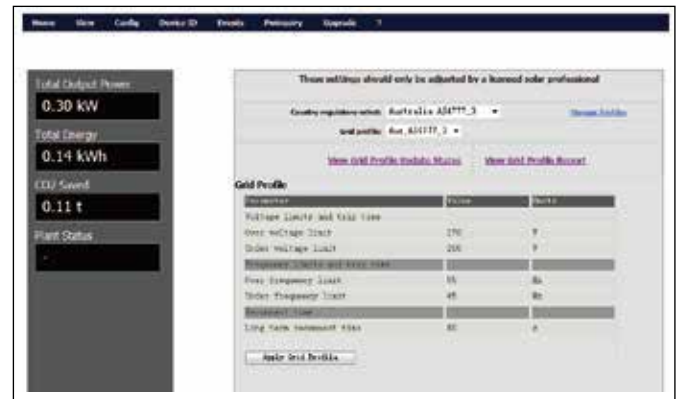
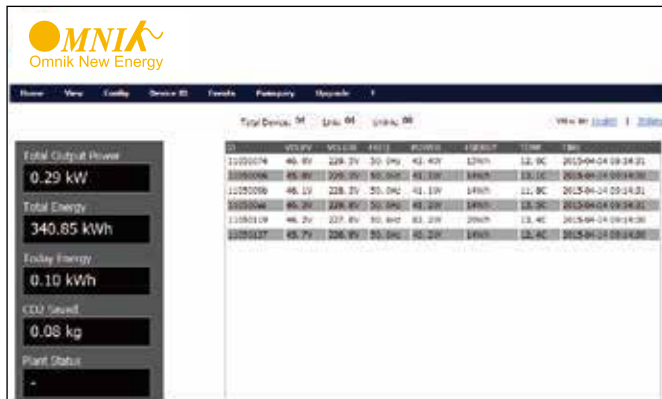


MICRO-KIT

MICRO-KIT collects performance data from each microinverter at 5-minute intervals via 2.4G RF. The data includes DC input voltage / current, AC output power/ voltage/ frequency, internal temperature. The data can be viewed by login the embedded web server through a browser locally. DTU can send command and data to microinverter, this is very important to system maintenance. The installer can restart microinverter, reset the fault of microinverter, upgrade the firmware of microinverter and so on.



Model	MICRO-KIT
Communication to Microinverter	
Type	2.4G RF
Sample rate	5 minute
Maximum distance (free space)	50m
Maximum number of inverters connected	99
Communication to Router/PC	
RJ45 Ethernet	10M/100M
Power Supply	
Type	External plug-in adapter
Adapter input voltage / frequency	100 to 240 V AC / 50 or 60Hz
Adapter output voltage / current	5V / 0.8A
Power consumption	2.5W typical, 5W maximum
Mechanical Data	
Ambient temperature range (°C)	-20° C to 55° C
Dimensions (W×H×D)	149mm×90mm×31mm
Weight	0.22kg
Mounting system	Wall mounting
Display	16 Characters x 2 lines LCD
Features	
Standard	IEC60950 IEC61000-6-2 FCC Part15 Class B / Class C
Standard warranty	2 years